

1. Download latest windows driver from <http://www.yeastar.com/download/Driver.rar>

2. Extract Driver.rar to C:\, you will find a new directory C:\Driver\

3. Confirm you have been successfully installed hardware - TDM800 Analog Interface Card

According to <TDM800 Hardware Install Guide>

4. Power on PC

If you can find the system prompt windows “Found New Hardware Wizard” , please follow operation I . If not, please follow operation II .

Operation I

Steps

1. Enter to the interface “Found New Hardware Wizard”.

Choose the advanced mode **install from a list or specific location** then click **Next**.



Figure 1

2. Choose your search and installation options.

a. Select **Search for the best driver in these locations** and **include this location in the search**.

b. Click **Browse** to select the driver location (windows 2000, windows XP or windows 2003) and click **Next**. (See Figure2)

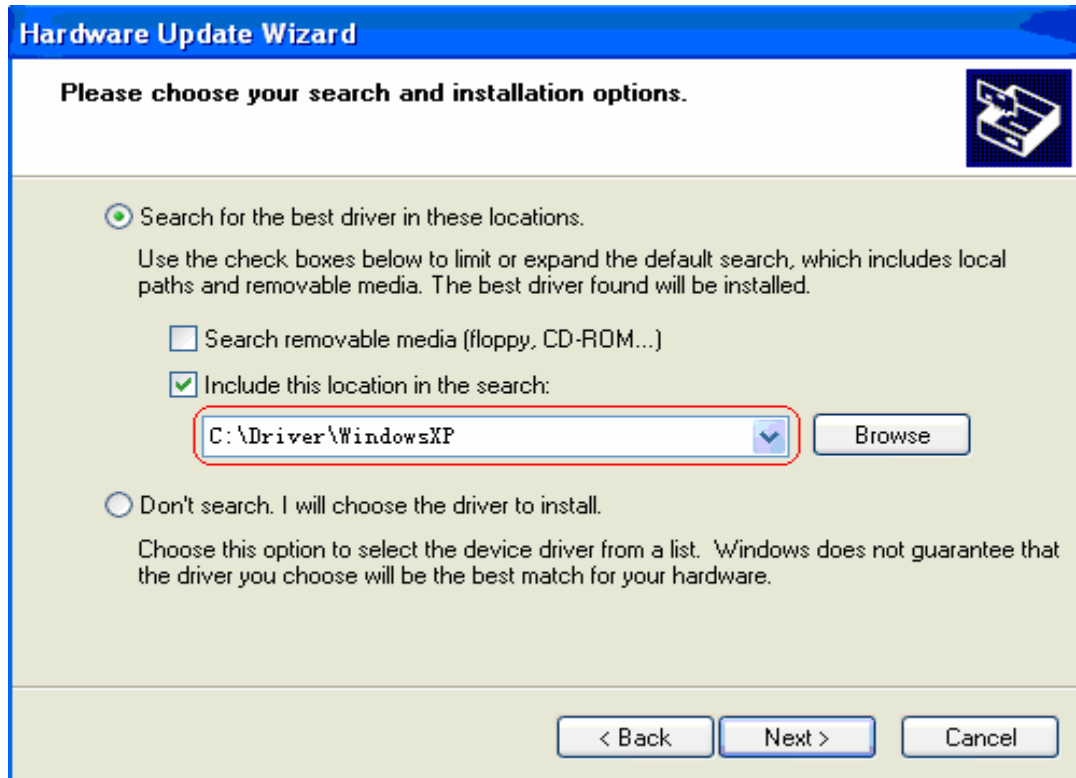


Figure 2

c. Wait a moment while the wizard is searching. (As Figure 3)

d. Maybe a dialogue box as Figure 4 will be pop-up, click **Continue Anyway** to proceed with installation. (See Figure 4)

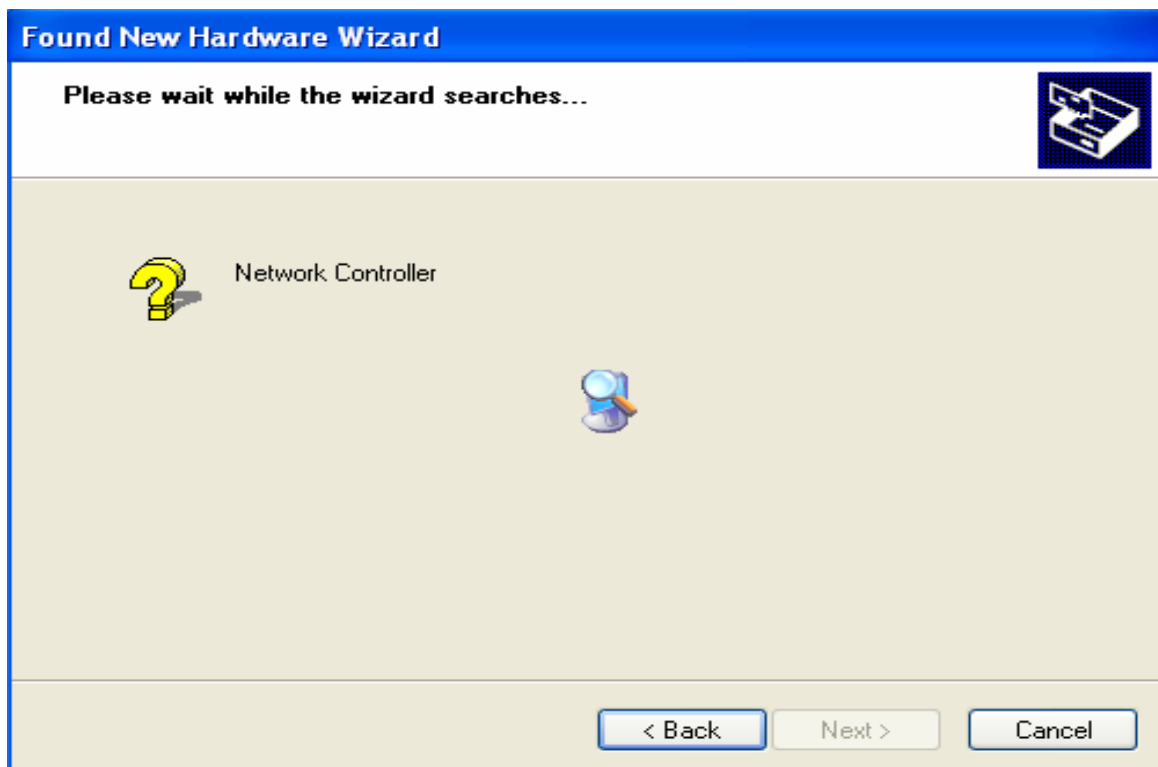


Figure 3



Figure 4

3. Complete the found task

Click **Finish** to successfully install the driver. (See Figure 5)



Figure 5

4. Your TDM800 PBX Gateway Card driver has been set up. Confirm it as following:
- Click **Start** ⇒ **Control Panel** ⇒ **Performance and Maintenance** ⇒ **System**
 - Choose Hardware and click **Device Manager**. (See Figure 6)

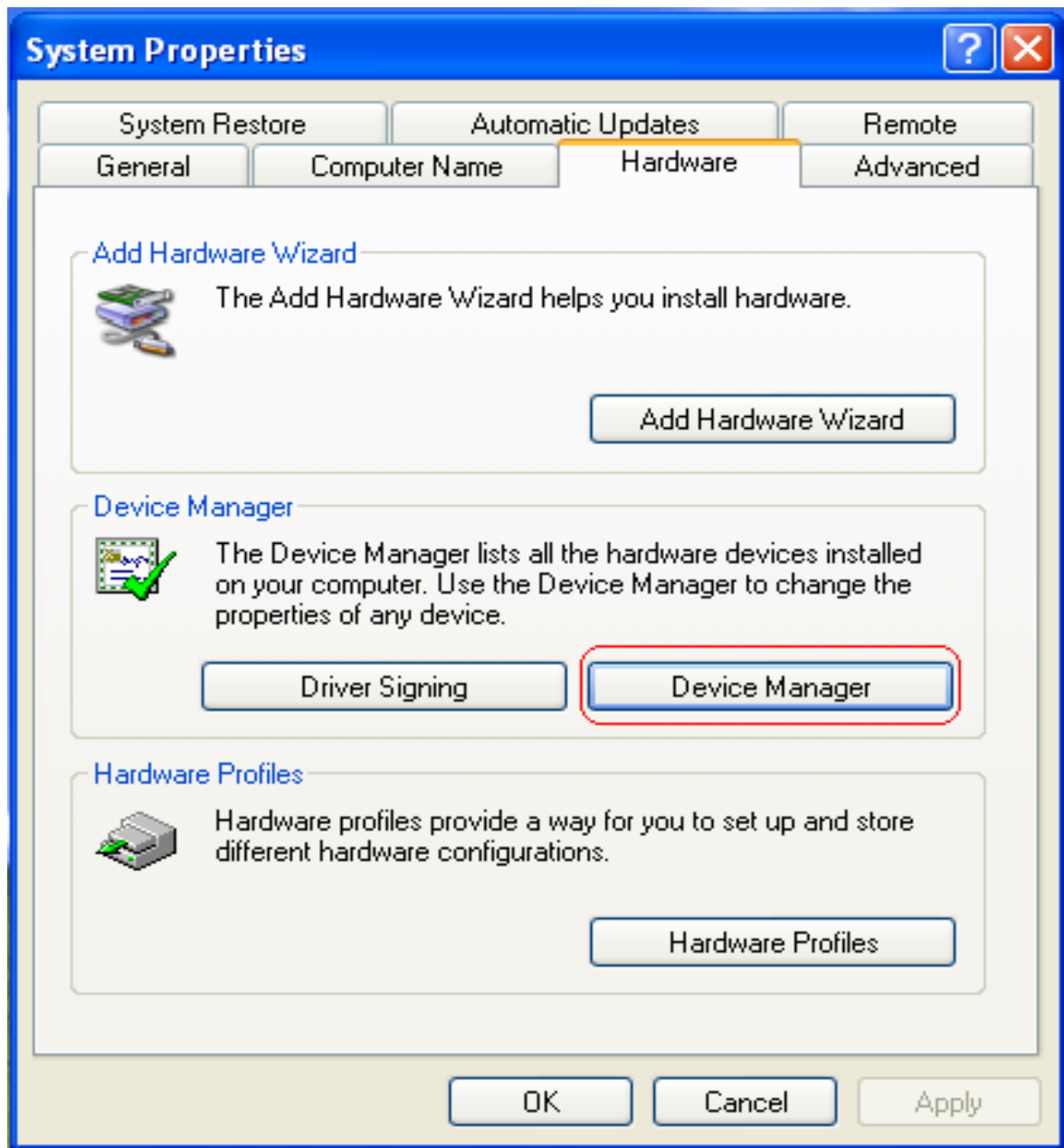


Figure 6

- Find out TDM800 PBX Gateway Card in Device Manager. (See Figure 7)

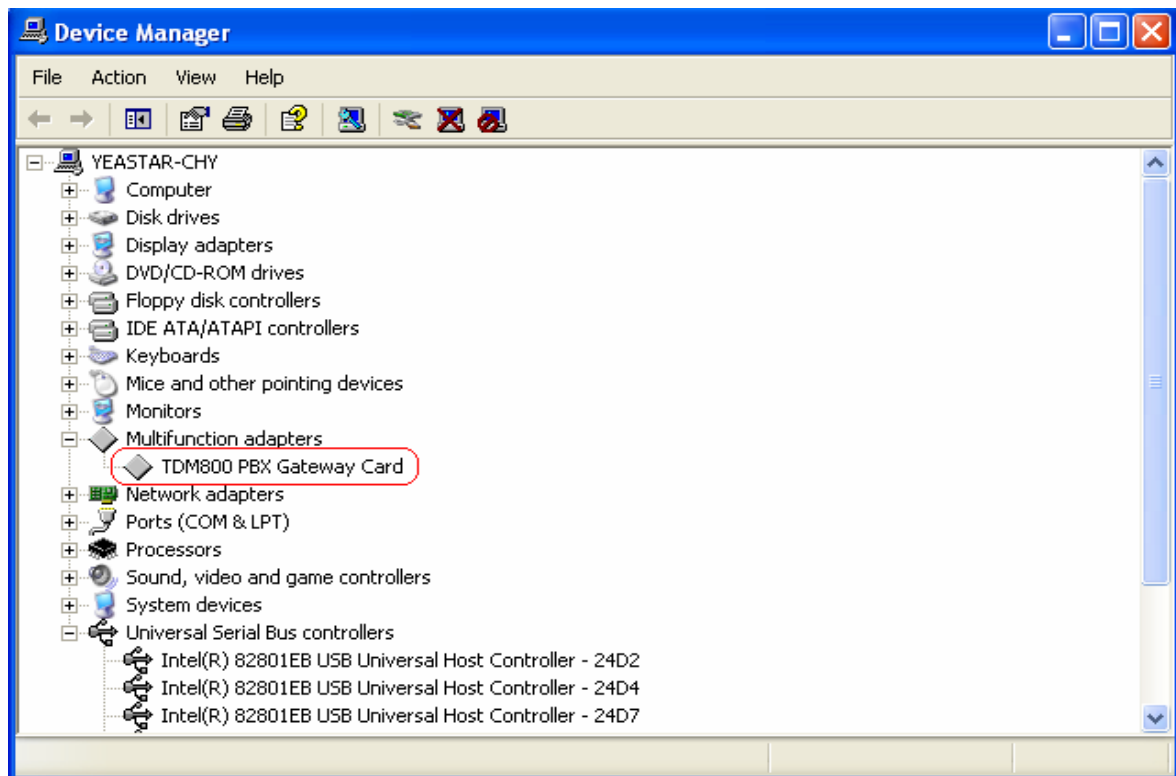


Figure 7

Attention: You should find the LEDs of relevant modules on TDM800 card were lighted if the driver has been successfully installed on PC.

Operation II

Steps

1. Click **Start** ⇒ **Control Panel** ⇒ **Performance and Maintenance** ⇒ **System**
2. Choose **Hardware** and click **Device Manager**. (See Figure 8)

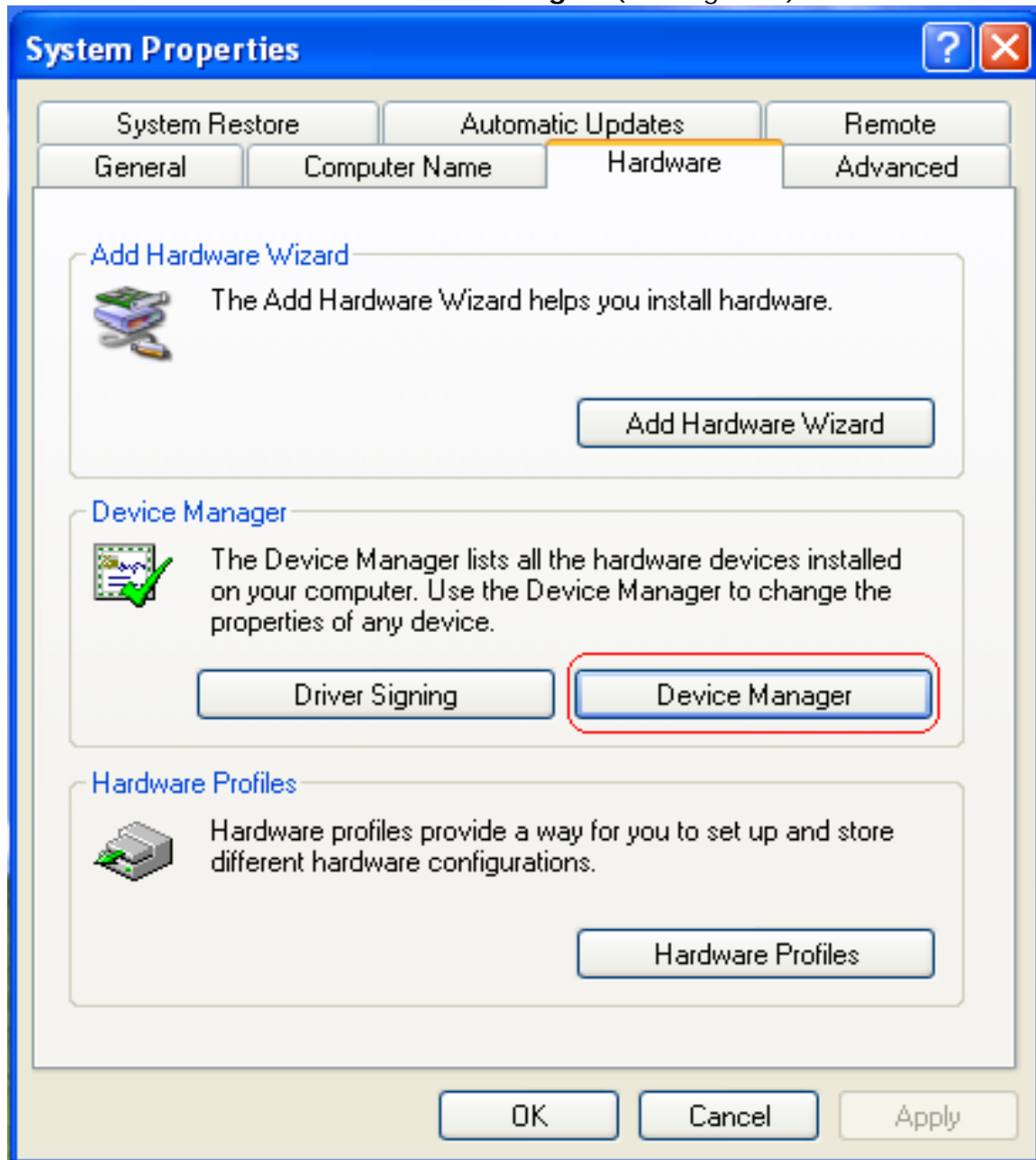


Figure 8

3. Click **Other devices** to find **Network Controller**. Click the right button to find **Properties**. (See Figure 9 &10)

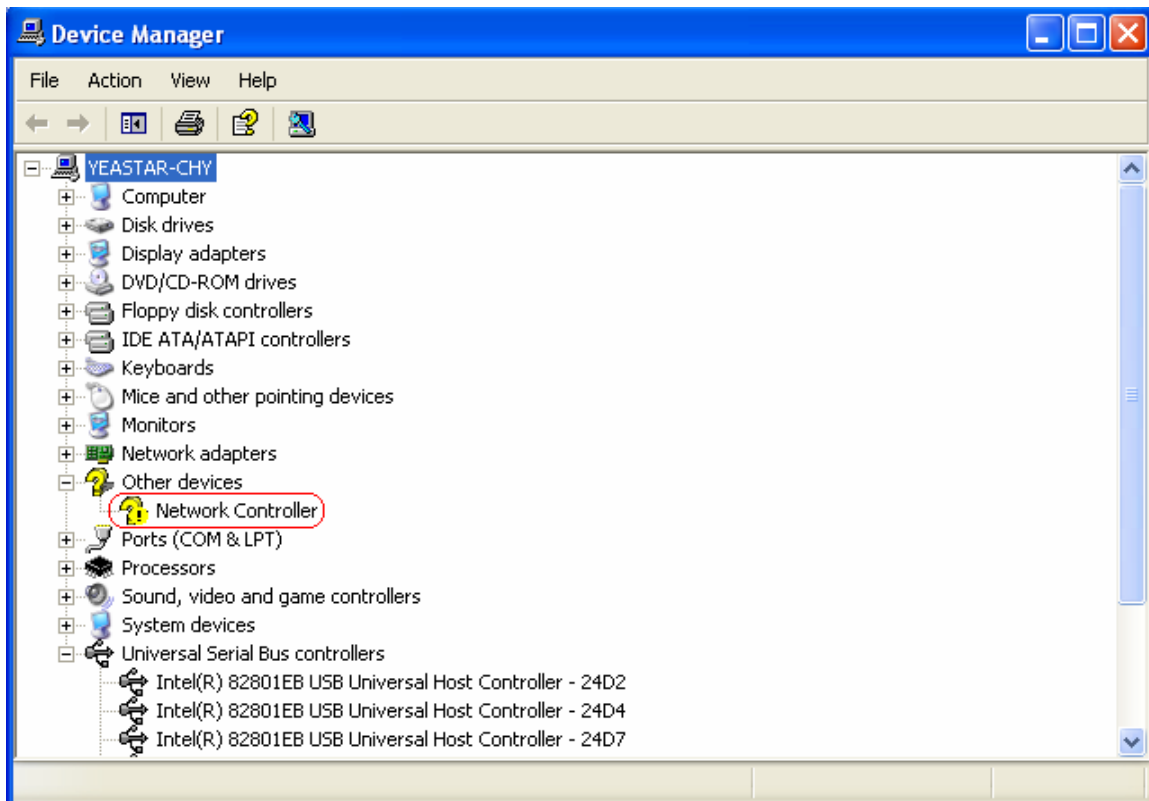


Figure 9

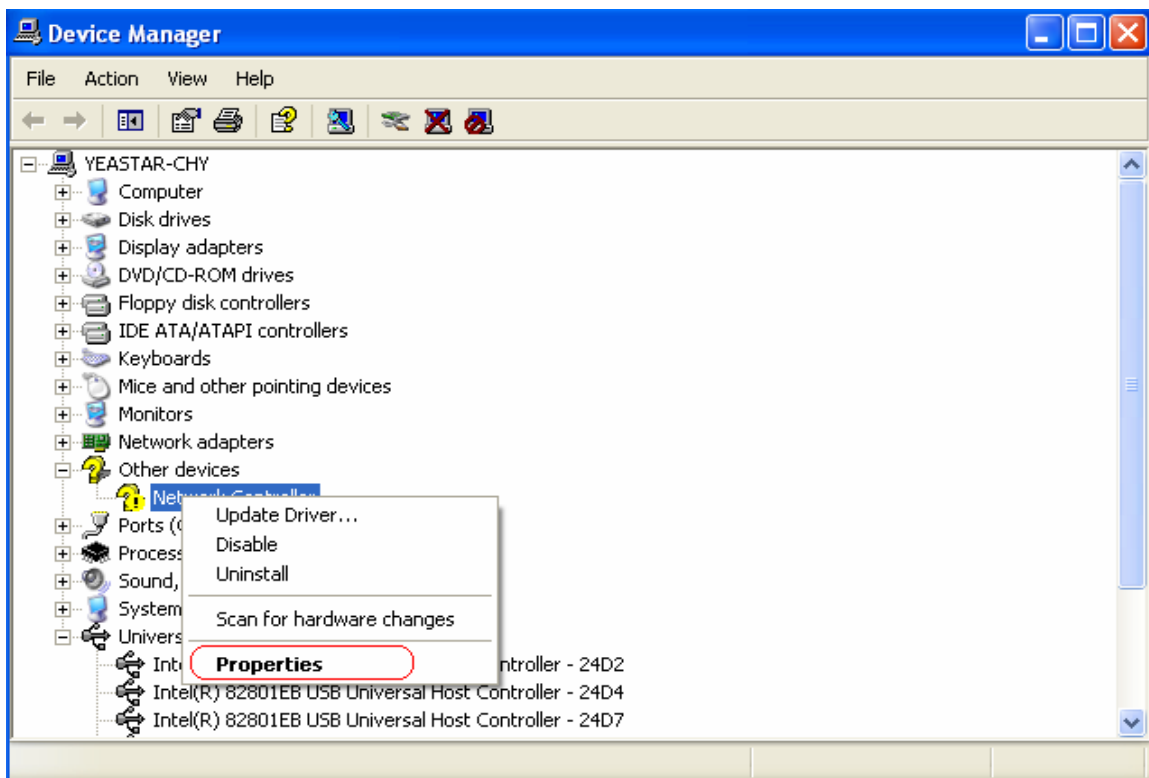


Figure 10

4. Click the **Driver** on **Network Controller Properties** then choose **Update Driver**.
(See Figure 11)

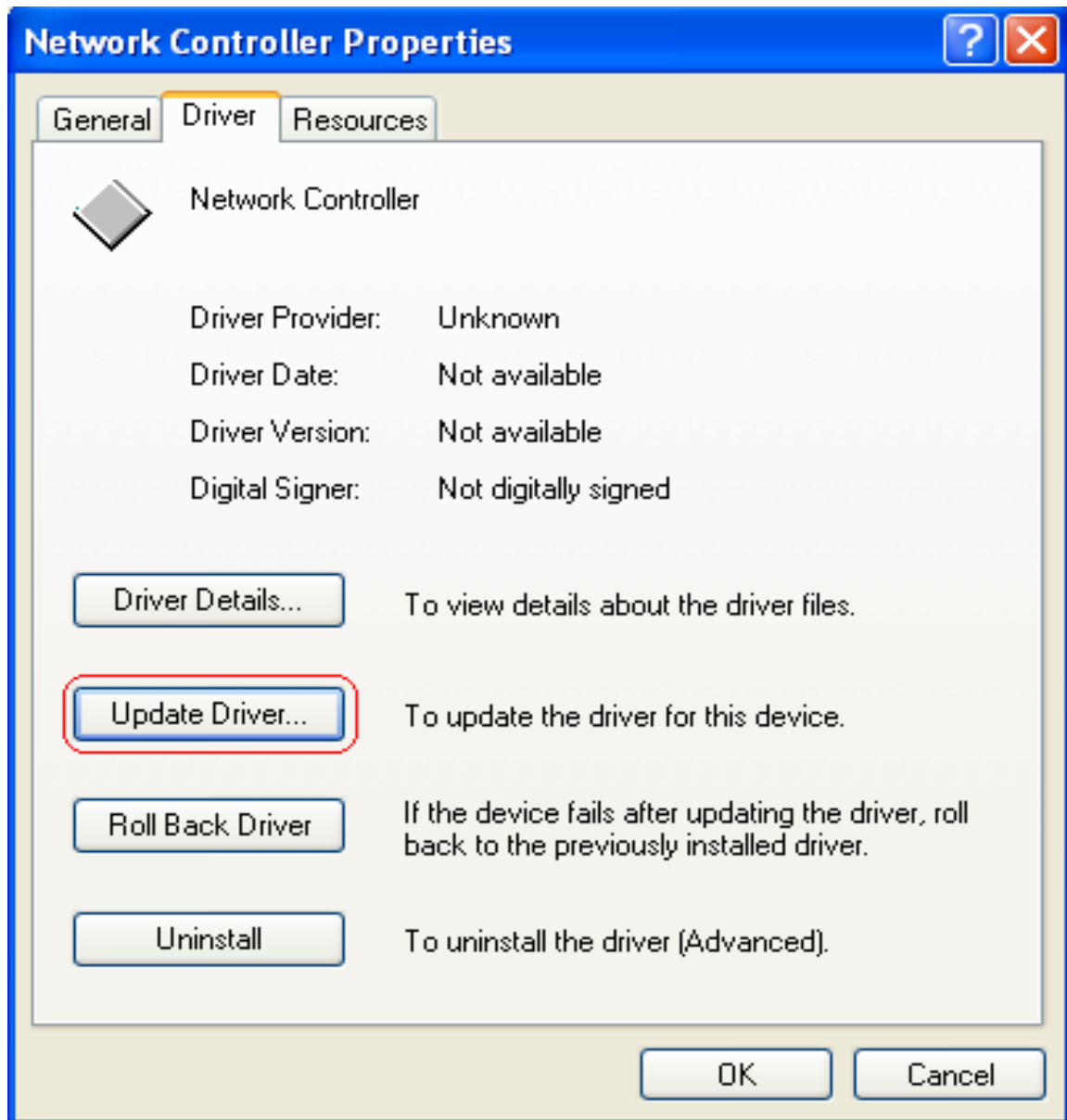


Figure 11

5. Hardware Update Wizard.
Choose the advanced mode **install from a list or specific location** then click **Next**.
(See Figure12)

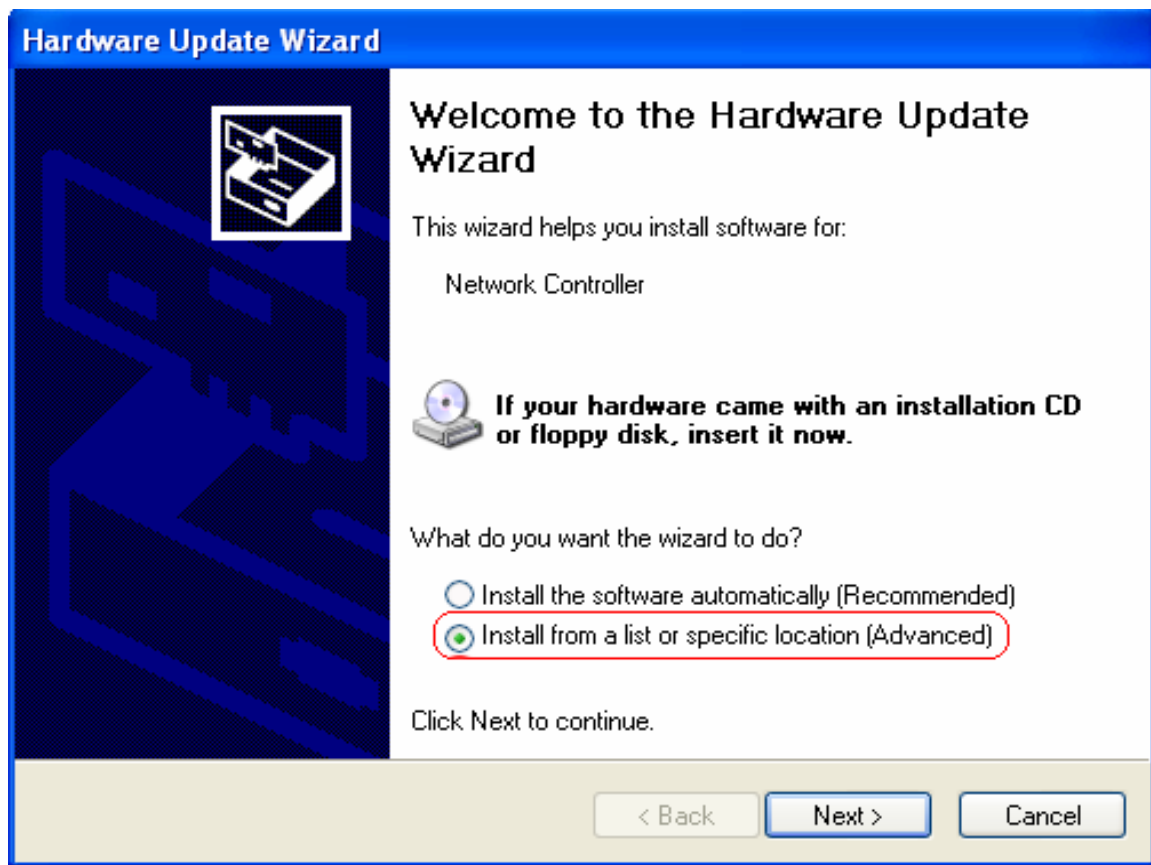


Figure 12

6. Choose search and installation options.

a. Search for the best driver in these locations and include this location in the search.

b. Click Browse to select the driver location (windows 2000, windows XP or windows 2003) and click **Next**. (See Figure13)

c. Wait a moment while the wizard is searching. (As Figure 14)

d. Maybe a dialogue box as Figure 15 will be pop-up, click Continue Anyway to proceed with installation. (See Figure 15)

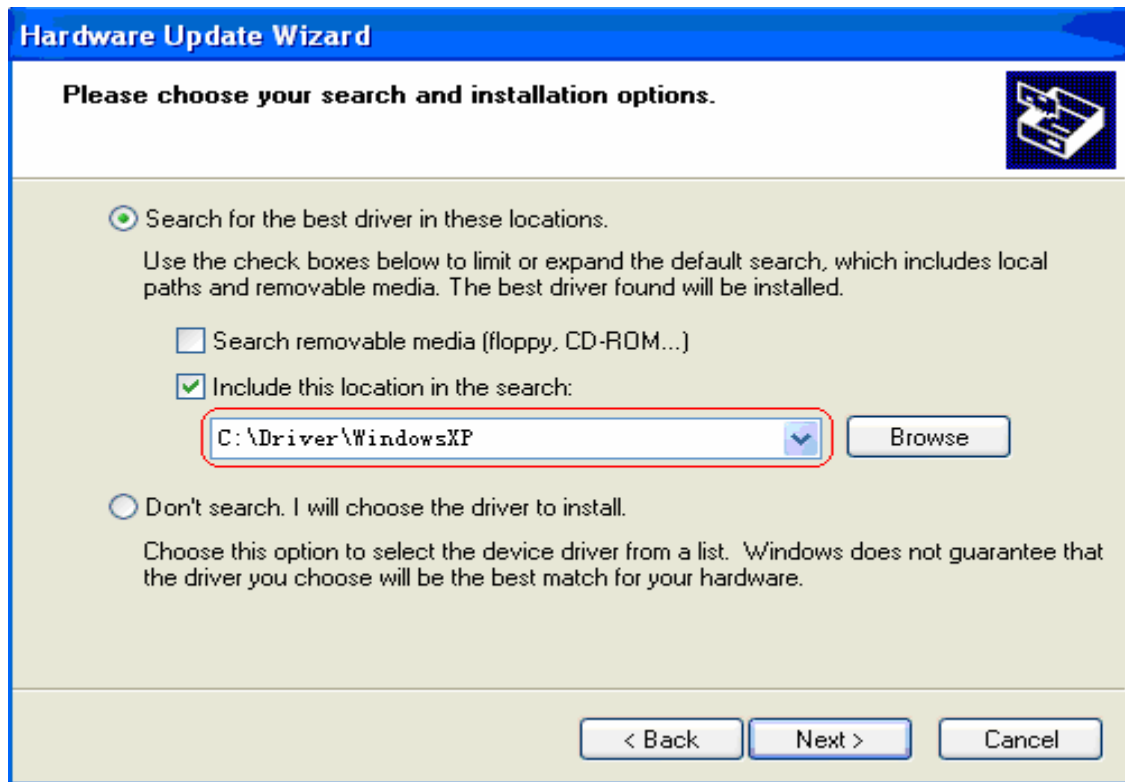


Figure 13

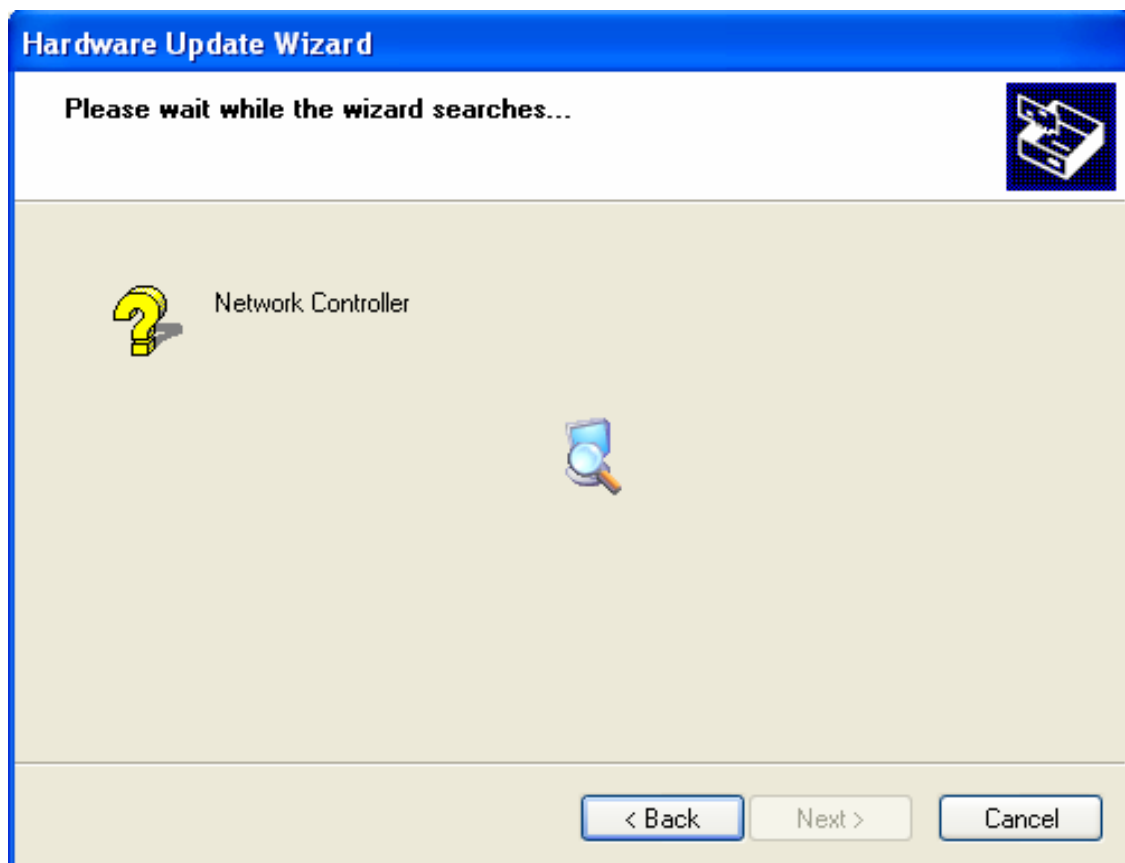


Figure 14



Figure 15

7. Complete the found task.

Click **Finish** to successfully install the driver. (See Figure 16)



Figure 16

8. Your TDM800 PBX Gateway Card driver has been set up. Confirm it as following:
- Click **Start** ⇒ **Control Panel** ⇒ **Function and Maintenance** ⇒ **System**
 - Choose Hardware and click **Device Manager**. (See Figure 17)

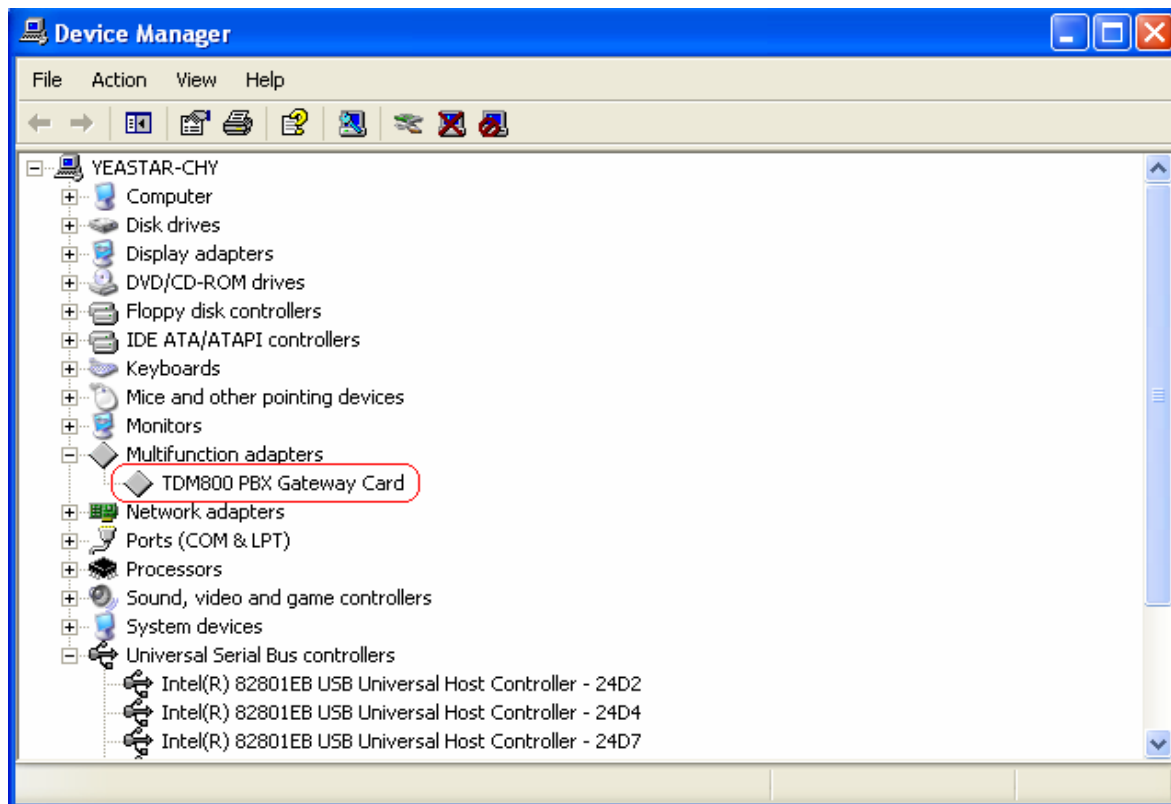


Figure 17

Attention: You should find the LEDs of relevant modules on TDM800 card were lighted if the driver has been successfully installed on PC.